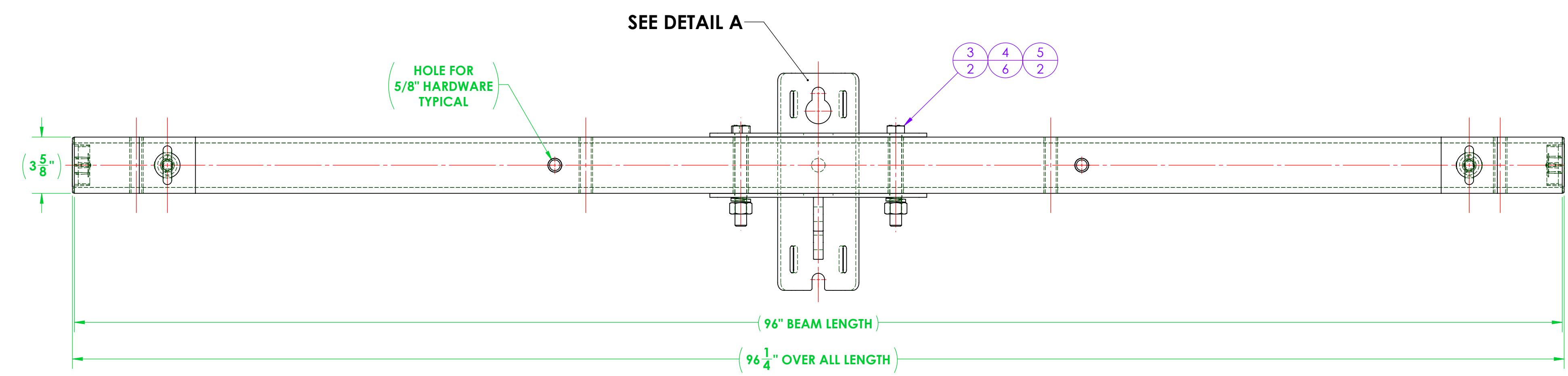
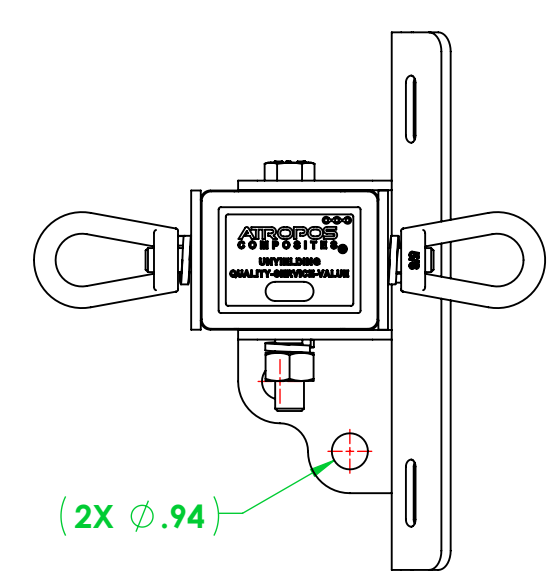
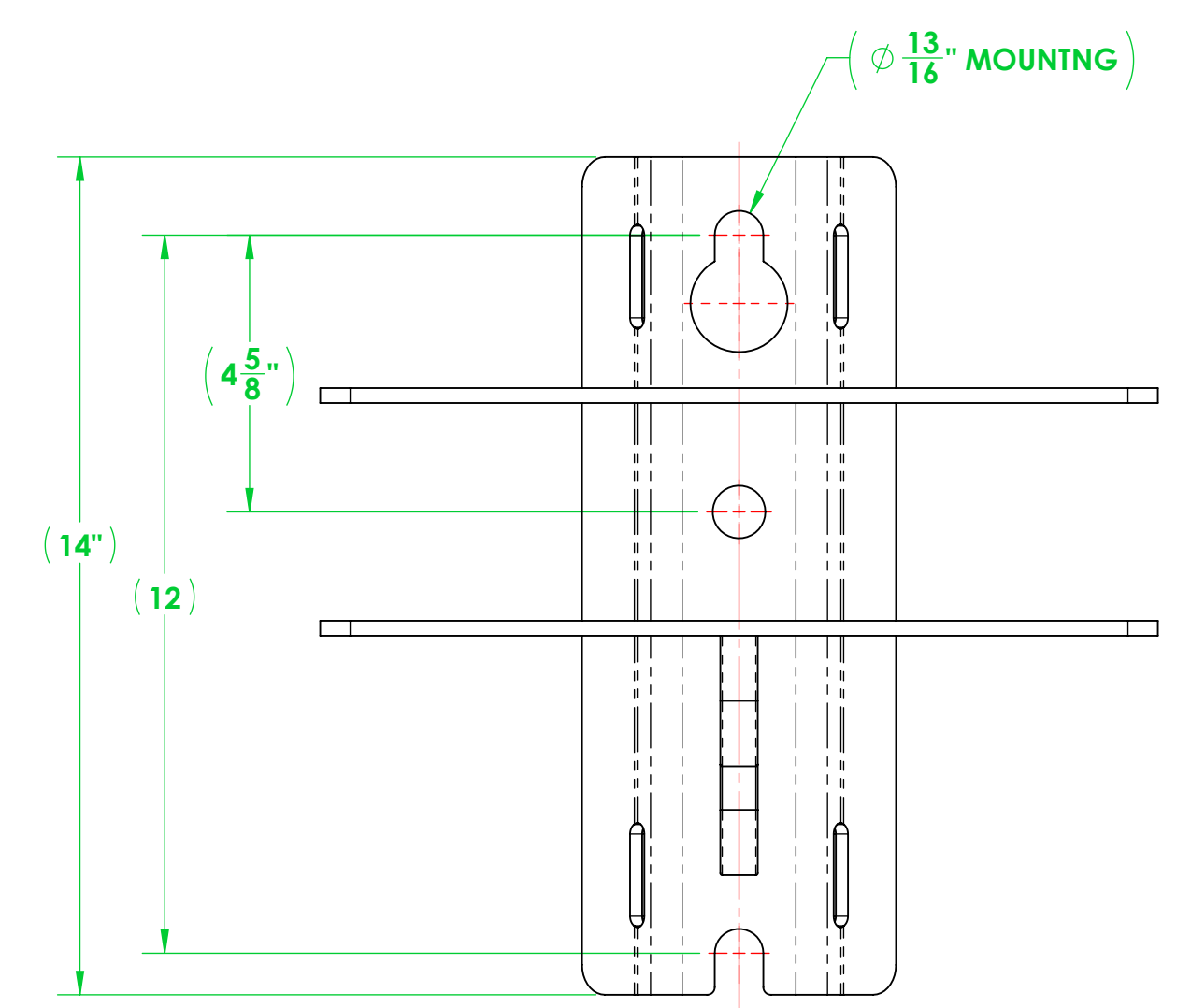
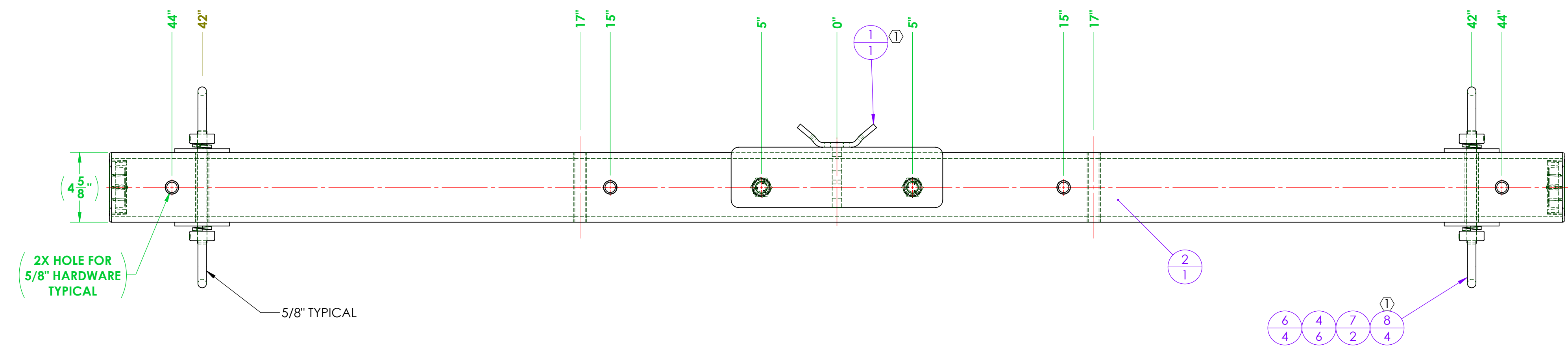


REVISIONS			
REV.	DESCRIPTION	DATE	APPROVED
1		4/22/2026	



ITEM NO.	PART NUMBER	DESCRIPTION	QTY.
① 1	A700-0044	CROSSARM MOUNTING BRACKET, DEADEND, 3400 SERIES	1
2	3403A096-D312-2R08 CA	ASSEMBLY, 3403 DEADEND CROSSARM, 8'	1
3	A616-0020-02	BOLT, HEX, 3/4"-10 X 6.00" LONG, HOT DIPPED GALVANIZED STEEL, 1-1/8" DRIVE	2
4	A616-0042-01	LOCK WASHER, FOR 3/4" SCREW, 0.766" ID, 1.265" OD, 0.188" THICK, HOT-DIPPED GALVANIZED STEEL	6
5	A616-0019-02	EXTREME STRENGTH NUT, HEX, 3/4"-10, 2H, HOT-DIPPED GALVANIZED	2
6	A700-0049	WASHER, SQUARE, 3.625" X 3.625" X 0.25 THICK WITH 0.66 THRU HOLE	4
7	A711-0044	ALL-THREAD, 5/8"-11 X 7.50" LONG, GALV. STEEL	2
① 8	A616-0017-02	EYENUT, 5/8"-11, GALVANIZED STEEL	4

GENERAL NOTES	UNLESS OTHERWISE SPECIFIED	NAME	DATE
	DIMENSIONS ARE IN INCHES STANDARD TOLERANCES	DRAWN: F. BRYANT	10/16/2025
	FRACTIONAL: ±1/32	CHECKED	
	ANGULAR: ±0.5° BEND: ±2°	ENG APPR:	
	TWO PLACE DECIMAL: ±0.03	MFG APPR:	
	THREE PLACE DECIMAL: ±0.005	Q.A.:	
	INTERPRET GEOMETRIC TOLERANCING PER: ANSI Y14.5		
	MATERIAL	PROPRIETARY AND CONFIDENTIAL	
	FINISH	THE INFORMATION CONTAINED IN THIS DRAWING IS THE SOLE PROPERTY OF VECTURIO. ANY REPRODUCTION IN PART OR AS A WHOLE WITHOUT THE WRITTEN PERMISSION OF VECTURIO IS PROHIBITED.	
DO NOT SCALE DRAWING		<p>ATROPOS COMPOSITES</p> <p>12208 MISSOURI BOTTOM ROAD, HAZELWOOD, MO 63042 PHONE: 314.714.4001 FAX: 314.895.1943 SALES@LABYRINTH-TECH.COM</p> <p>TITLE: ASSEMBLY, RUS, 3403, DEADEND, (2) WIRE, CROSSARM WITH GAIN, 8'</p> <p>SIZE DWG. NO. D3403A096-D312-2R08 REV 1</p> <p>SCALE: 1:8 WEIGHT: 82.65 SHEET 1 OF 1</p>	